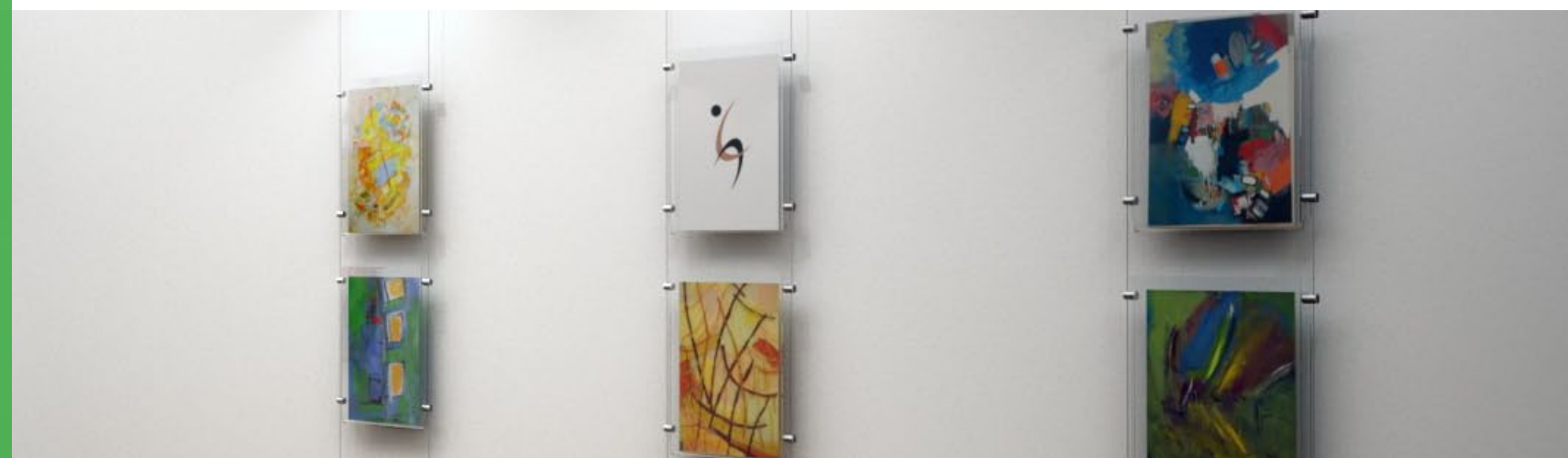


SYSTEMATIC ART
Picture Hanging Systems



The Art of Hanging Art

Product Catalog
2013 -2014



CONTENTS

Tension Systems

Tension Systems	03 - 010
-----------------	----------

Lower Profile Tensioners	011
--------------------------	-----

Cable Clamps	012 - 014
--------------	-----------

Acrylic Pocket Displays	015
-------------------------	-----



Tension Cable Set - (Fixed) - Ceiling to Floor Kit

For use with:

Cable Hooks / Side Clamps

Price

\$27.95

\$27.95	10' / 304.8cm
\$29.95	20' / 609.6cm

Examples:



Product Information

The (Fixed) **Point-To-Point** tension cable set with its upper cable Coupler and lower Tensioner gives users the ability to suspend objects from Ceiling to Floor.

The Ceiling to Floor tension cable set is perfect for picture hanging, window displays, offices, display cases, showrooms, menu boards, signage, point of purchase, conference rooms, and locations where items are frequently changed or for areas that need an extra level of stability.

After both the upper and lower supports have been installed, the cable is threaded through the upper support to the lower tensioner and then secured to the provided **Ball-Anchor**.

After the cable has been threaded through the lower support and secured to the Ball-Anchor, the excess cable is cut and the lower Tensioner is then turned clock-wise to create the desired tension.

Application: Ceiling to Floor

Material: Aluminum

Available Finishes: Matte Silver / Anodized Black - Semi Gloss / White Powder Coated - Semi Gloss

Available Cable Lengths: 10' / 304.8cm or 20' / 609.6cm

Rated Weight: 22 lbs / 9.9kg (Solid Structure) - 7 lbs / 3.1kg (Drywall-Ceiling)

The following items are included with (Fixed) Ceiling to Floor Tension Cable Set:

- (1) Upper Cable Coupler - (Top support)
- (1) Lower Tensioner - (Lower Support)
- (1) Cable
- (1) Ball-Anchor
- (1) Spring
- (1) Hex Wrench
- (2) Upper and Lower Base mounting screws
- (2) Anchors and (2) screws for basic (light weight drywall installation)

The products rated weight pertains to the hardware only.

Actual carrying weight may vary based on both installation and variable conditions of the structure.

Instalation

Note: Toggle Bolt Anchors are required in order to achieve max weight load when installed to drywall ceiling.

IMPORTANT: As conditions are different from location to location it is mandatory to check that the top ceiling fixings are strong enough to take the weight of the objects being hung.
The variable conditions of both the ceiling and floors may change the products allotted weight and sound judgment must always be used by the customer. It is also important never hang items in locations that could potentially cause damage or harm to items of value, humans, pets, or anything living for that matter.

Tension Systems - Tension Systems

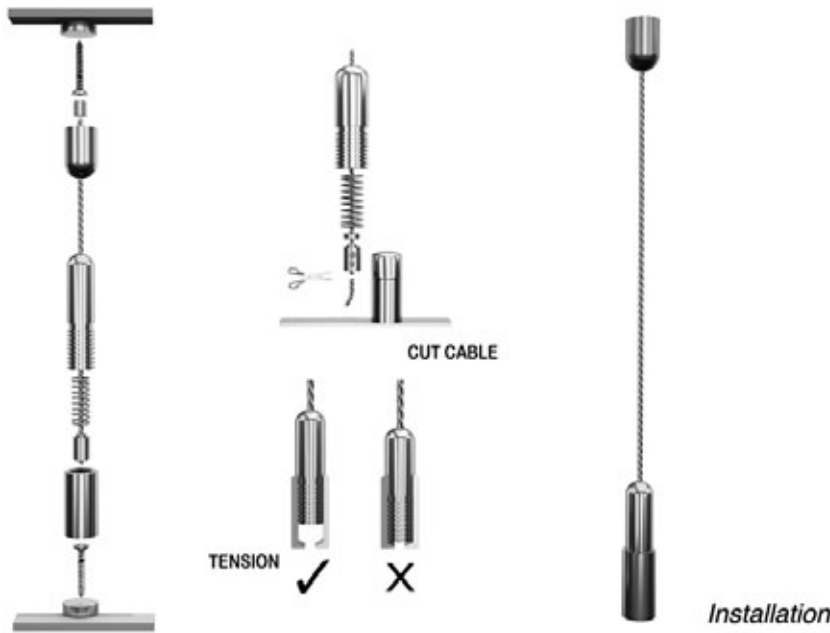


Tension Cable Set - (Fixed) - Ceiling to Floor Kit

For use with:
Cable Hooks / Side Clamps

Price	\$27.95
	10' / 304.8cm
	\$29.95
	20' / 609.6cm

Instalation Instructions:



Compatible With:

Cable Hooks

Micro Hook - (Side Screw) - Picture Hook

For more about this product visit [Home & Office Catalog, page 017](#)

Cable Hooks

Basel - (Side Screw) - Mini Hook

For more about this product visit [Home & Office Catalog, page 017](#)

Cable Hooks

L-Hook - (Side Screw) - Picture Hook

For more about this product visit [Home & Office Catalog, page 017](#)

Cable Hooks

Crane Hook - (Side Screw) - Picture Hook

For more about this product visit [Home & Office Catalog, page 017](#)

Side Clamps

Side Clamp - Single Sided - (Round) - 3/16"

For more about this product visit [page 012](#)

Side Clamps

Side Clamp - Double Sided - (Round) - 3/16"

For more about this product visit [page 012](#)

Side Clamps

Side Clamp - Single Sided - (Round) - 5/16"

For more about this product visit [page 013](#)

Side Clamps

Side Clamp - Double Sided - (Round) - 5/16"

For more about this product visit [page 013](#)

Cable Hooks

Self-Gripping - (Small) - Picture Hook

For more about this product visit [Home & Office Catalog, page 018](#)

Cable Hooks

Self-Gripping - (Sailors) - Picture Hook

For more about this product visit [Home & Office Catalog, page 018](#)

Cable Hooks

Self Gripping - (Picture Hook) with Safety-Lock

For more about this product visit [Home & Office Catalog, page 018](#)

Cable Hooks

Self Gripping - (Captains) - Picture Hook

For more about this product visit [Home & Office Catalog, page 018](#)

Side Clamps

Side Clamp - Single Sided - (Round) - 7/16"

For more about this product visit [page 014](#)

Side Clamps

Side Clamp - (Rotating) - Single Sided 3/8"

For more about this product visit [page 014](#)

Side Clamps

Side Clamp - (Rotating) - Double Sided 3/8"

For more about this product visit [page 014](#)

Tension Systems - Tension Systems



Tension Cable Set - (Fixed) - Wall to Wall Kit

For use with:

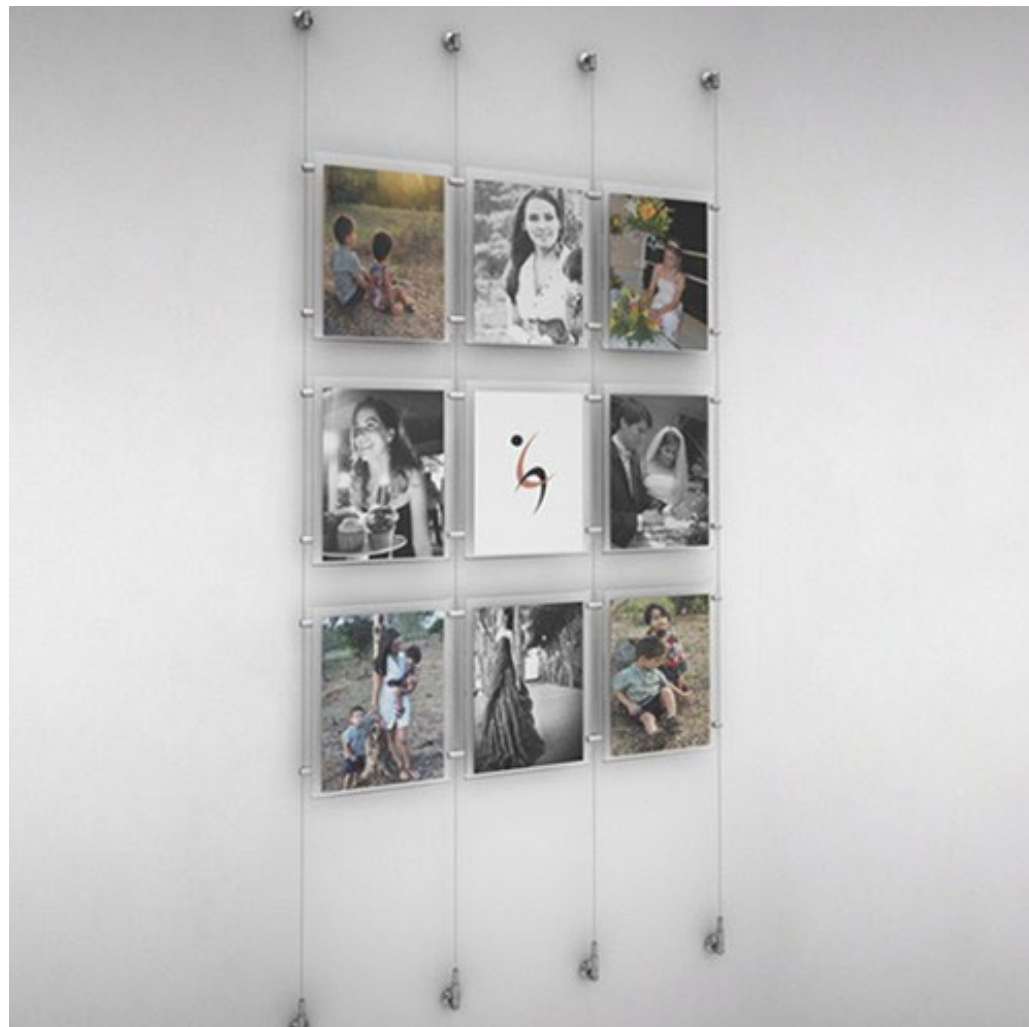
Cable Hooks / Side Clamps

Price

\$27.95

\$27.95 10' / 304.8cm

Examples:



Product Information

The **Wall-to-Wall** tension set gives users the ability to securely suspend objects from wall to wall and is ideal for high traffic areas.

The Wall-to-Wall system is perfect for picture hanging, window displays, offices, showrooms, menu boards, signage, point of purchase, conference rooms, and locations where items are frequently changed.

Once the upper and lower tensioners have been installed, the cable is then threaded through lower tensioner and the Ball-Anchor is secured to the cable.

After the ball-anchor has been secured, the excess cable is cut and the Tensioner is secured to the lower base and turned clock-wise to create the desired tension.

Application: Wall - to - Wall

Material: Aluminum

Finish: Satin -Silver

Available Cable Lengths: 10' / 304.8cm or 20' / 609.6cm

Rated Weight: 26 lbs / 11.8kg (Solid Structure) - 12 lbs / 3.6KG (Drywall)

The following items are included with Tension Cable Set:

- (1) Upper Cable Coupler
- (1) Lower Cable Coupler / Tensioner
- (1) Stainless Steel Cable 10' / 304cm or 20' 609cm
- (2) Coupler mounting rings for upper and lower supports
- (1) Anchor Ball - To secure cable to lower coupler
- (1) Tension Spring
- (2) Anchors and (2) screws for basic (light weight) drywall installation

The products rated weight pertains to the hardware only.

Actual carrying weight may vary based on both installation and variable conditions of the structure.

Note: Toggle Bolt Anchors are required in order to achieve max weight load when installed to drywall ceiling.

Tension Systems - Tension Systems



Tension Cable Set - (Fixed) - Wall to Wall Kit

For use with:

Cable Hooks / Side Clamps

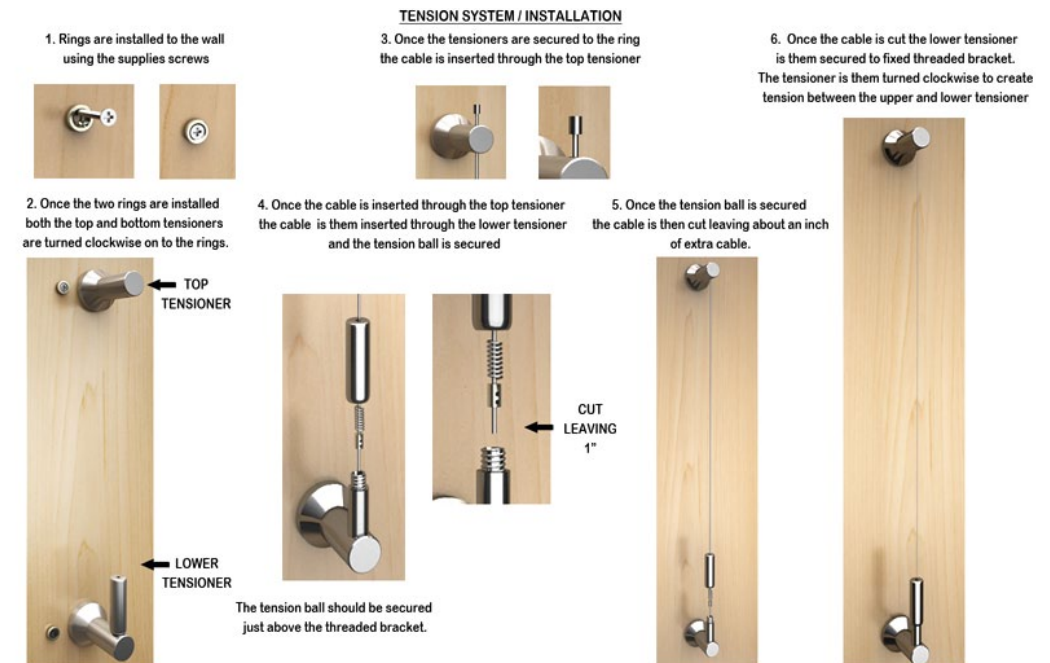
Price

\$27.95

\$27.95 10' / 304.8cm

Compatible With:

Instalation Instructions:



Cable Hooks

Micro Hook - (Side Screw) - Picture Hook

For more about this product visit [Home & Office Catalog, page 017](#)



Cable Hooks

Basel - (Side Screw) - Mini Hook

For more about this product visit [Home & Office Catalog, page 017](#)



Cable Hooks

L-Hook - (Side Screw) - Picture Hook

For more about this product visit [Home & Office Catalog, page 017](#)



Cable Hooks

Crane Hook - (Side Screw) - Picture Hook

For more about this product visit [Home & Office Catalog, page 017](#)



Side Clamps

Side Clamp - Single Sided - (Round) - 3/16"

For more about this product visit [page 012](#)



Side Clamps

Side Clamp - Double Sided - (Round) - 3/16"

For more about this product visit [page 012](#)



Side Clamps

Side Clamp - Single Sided - (Round) - 5/16"

For more about this product visit [page 013](#)



Side Clamps

Side Clamp - Double Sided - (Round) - 5/16"

For more about this product visit [page 013](#)



Cable Hooks

Self-Gripping - (Small) - Picture Hook

For more about this product visit [Home & Office Catalog, page 018](#)



Cable Hooks

Self-Gripping - (Sailors) - Picture Hook

For more about this product visit [Home & Office Catalog, page 018](#)



Cable Hooks

Self Gripping - (Picture Hook) with Safety-Lock

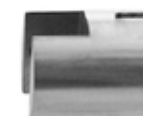
For more about this product visit [Home & Office Catalog, page 018](#)



Cable Hooks

Self Gripping - (Captains) - Picture Hook

For more about this product visit [Home & Office Catalog, page 018](#)



Side Clamps

Side Clamp - Single Sided - (Round) - 7/16"

For more about this product visit [page 014](#)



Side Clamps

Side Clamp - (Rotating) - Single Sided 3/8"

For more about this product visit [page 014](#)



Side Clamps

Side Clamp - (Rotating) - Double Sided 3/8"

For more about this product visit [page 014](#)

Tension Systems - Tension Systems



Tension Cable Set - (Point-To-Point) - Self Gripping

For use with:
Cable Hooks / Side Clamps

Price		\$29.95
\$29.95	10' / 304.8cm	
\$31.95	20' / 609.6cm	

Examples:



Product Information

The Self-Gripping **point-to-point** tension cable set gives users the ability to suspend objects from ceiling-to-floor, wall-to-wall and ceiling-to-wall.

Once installed, the upper and lower base can be rotated 360° while the directional pivot head can swivel up to 180° and in two directions. This system provides great flexibility for hanging objects in various directions and configurations.

The Tension Cable system with its Self-Gripping lower pivot head is perfect for picture hanging, window displays, offices, showrooms, menu boards, signage, point of purchase, conference rooms, and locations where items are frequently changed.

Application: Wall - to - Wall
Material: Aluminum
Finish: Satin -Silver
Available Cable Lengths: 10' / 304.8cm or 20' / 609.6cm
Rated Weight: 26 lbs / 11.8kg (Solid Structure) - 12 lbs / 3.6KG (Drywall)

- The following items are included with Tension Cable Set:
- (1) Upper Cable Coupler
 - (1) Lower Cable Coupler / Tensioner
 - (1) Stainless Steel Cable 10' / 304cm or 20' 609cm
 - (2) Coupler mounting rings for upper and lower supports
 - (1) Anchor Ball - To secure cable to lower coupler
 - (1) Tension Spring
 - (2) Anchors and (2) screws for basic (light weight) drywall installation

The products rated weight pertains to the hardware only.

Actual carrying weight may vary based on both installation and variable conditions of the structure.

Note: Toggle Bolt Anchors are required in order to achieve max weight load when installed to drywall ceiling.

Tension Systems - Tension Systems



Tension Cable Set - (Point-To-Point) - Self Gripping

For use with:

Cable Hooks / Side Clamps

Price

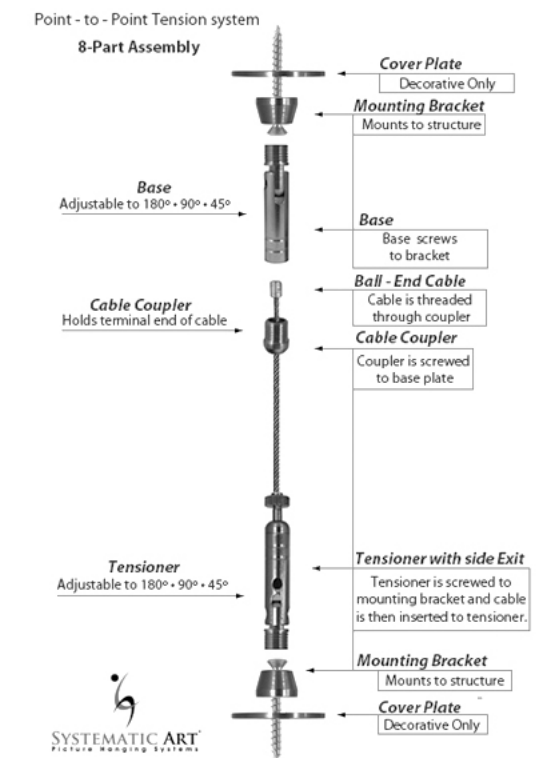
\$29.95

\$29.95 10' / 304.8cm

\$31.95 20' / 609.6cm

Compatible With:

Installation Instructions:



Cable Hooks

Micro Hook - (Side Screw) - Picture Hook

For more about this product visit
[Home & Office Catalog, page 017](#)



Cable Hooks

Basel - (Side Screw) - Mini Hook

For more about this product visit
[Home & Office Catalog, page 017](#)



Cable Hooks

L-Hook - (Side Screw) - Picture Hook

For more about this product visit
[Home & Office Catalog, page 017](#)



Cable Hooks

Crane Hook - (Side Screw) - Picture Hook

For more about this product visit
[Home & Office Catalog, page 017](#)



Side Clamps

Side Clamp - Single Sided - (Round) - 3/16"

For more about this product visit
[page 012](#)



Side Clamps

Side Clamp - Double Sided - (Round) - 3/16"

For more about this product visit
[page 012](#)



Side Clamps

Side Clamp - Single Sided - (Round) - 5/16"

For more about this product visit
[page 013](#)



Side Clamps

Side Clamp - Double Sided - (Round) - 5/16"

For more about this product visit
[page 013](#)



Cable Hooks

Self-Gripping - (Small) - Picture Hook

For more about this product visit
[Home & Office Catalog, page 018](#)



Cable Hooks

Self-Gripping - (Sailors) - Picture Hook

For more about this product visit
[Home & Office Catalog, page 018](#)



Cable Hooks

Self-Gripping - (Picture Hook) with Safety-Lock

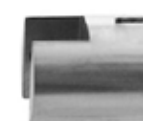
For more about this product visit
[Home & Office Catalog, page 018](#)



Cable Hooks

Self-Gripping - (Captains) - Picture Hook

For more about this product visit
[Home & Office Catalog, page 018](#)



Side Clamps

Side Clamp - Single Sided - (Round) - 7/16"

For more about this product visit
[page 014](#)



Side Clamps

Side Clamp - (Rotating) - Single Sided 3/8"

For more about this product visit
[page 014](#)



Side Clamps

Side Clamp - (Rotating) - Double Sided 3/8"

For more about this product visit
[page 014](#)

Tension Systems - Tension Systems



Tension Cable Set - (Point-To-Point) - Fixed Anchor Plates

For use with:

Cable Hooks / Side Clamps

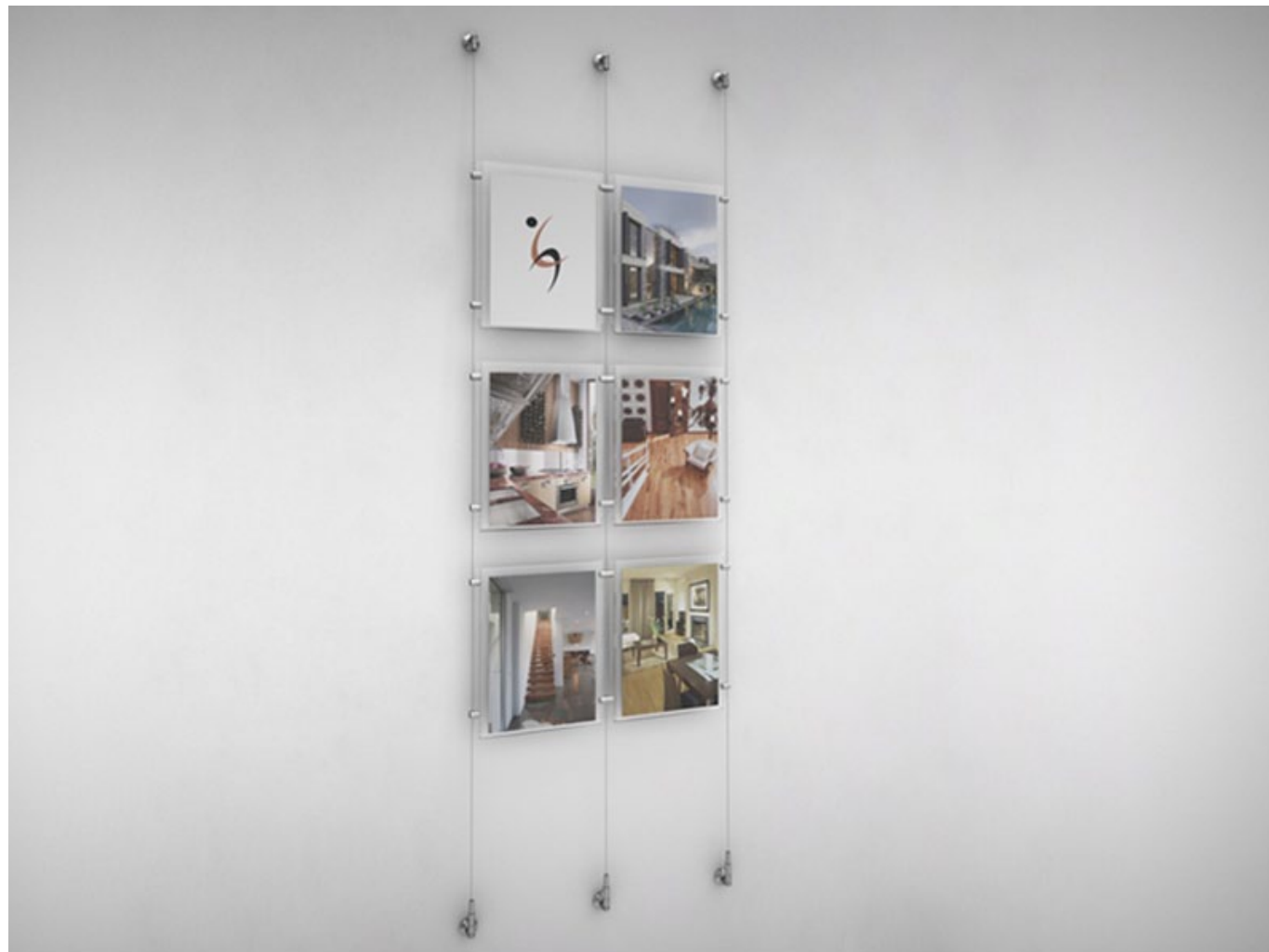
Price

\$36.95

\$36.95 10' / 304.8cm

\$38.95 20' / 609.6cm

Examples:



Product Information

The articulated **Point-To-Point** tension set with its fixed anchor plate gives users the ability to suspend objects from ceiling to floor, wall to wall and ceiling to wall.

Once installed, the upper and lower base can be rotated 360 degrees while the directional pivot head can swivel up to 180° and in two directions. This system provides great flexibility for hanging objects in various directions and configurations.

The (Fixed) anchor plate tension system is perfect for picture hanging, window displays, offices, show-rooms, menu boards, signage, point of purchase, conference rooms, and locations where items are frequently changed.

Application: Wall - Ceiling - Floor

Material: Brass

Finish: Satin -Silver

Available Cable Lengths: 10' / 304.8cm or 20' / 609.6cm

Rated Weight: 36 lbs / 16.3kg (Solid Structure) - 12 lbs / 3.6KG (Drywall-Ceiling)

The following items are included with Tension Cable Set:

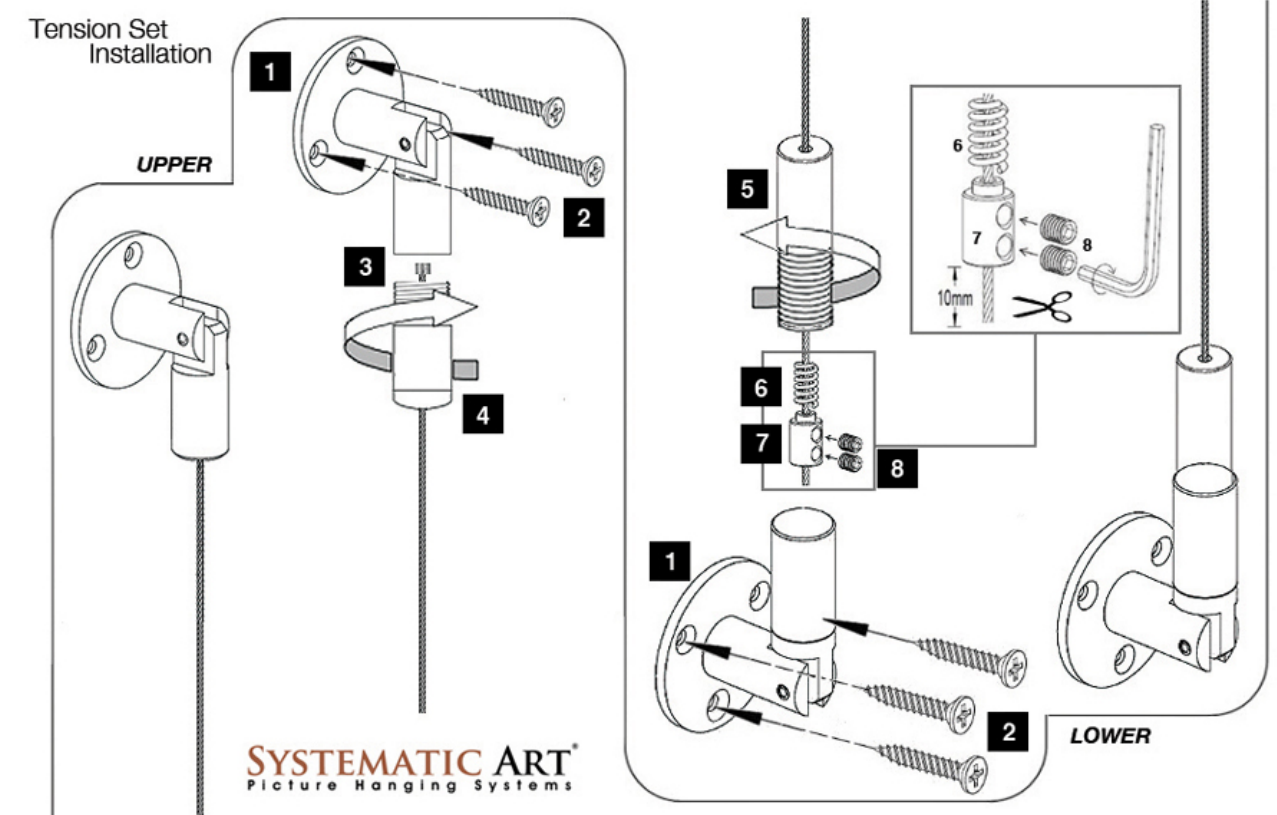
- (1) Upper Cable Coupler - Pivot Head
- (1) Lower Cable Coupler / Tensioner - Pivot Head
- (1) Stainless Steel Cable 10' / 304cm or 20' 609cm
- (2) Coupler mounting screws for upper and lower supports
- (1) Anchor Ball - To secure cable to lower coupler
- (1) Tension Spring
- (6) Anchors and (6) screws for basic (light weight) drywall installation

The products rated weight pertains to the hardware only. Actual carrying weight may vary based on both installation and variable conditions of the structure.

Actual carrying weight may vary based on both installation and variable conditions of the structure.

Installation

Note: Toggle Bolt Anchors are required in order to achieve max weight load when installed to drywall ceiling.



Tension Systems - Tension Systems



Tension Cable Set - (Point-To-Point) - Fixed Anchor Plates

For use with:
Cable Hooks / Side Clamps

Price	\$36.95
	\$38.95

Installation Instructions:
Installation Tension Set - Fixed Anchor Plates

Once the upper and lower hardware have been installed, the cable is threaded through lower tensioner and then secured to the provided Ball-Anchor.

After the Ball-Anchor has been secured, the lower Tensioner is turned clock-wise to create the desired tension.

Last, excess cable is threaded through lower couplers side exit and then cut if desired.

The products rated weight pertains to the hardware only. Actual carrying weight may vary based on both installation and variable conditions of the structure.

Actual carrying weight may vary based on both installation and variable conditions of the structure.

IMPORTANT: As conditions are different from location to location it is mandatory to check that the top ceiling fixings are strong enough to take the weight of the objects being hung. The variable conditions of both the ceiling and floors may change the products allotted weight and sound judgment must always be used by the customer. It is also important never hang items in locations that could potentially cause damage or harm to items of value, humans, pets, or anything living for that matter.

Compatible With:

Cable Hooks

Micro Hook - (Side Screw) - Picture Hook

For more about this product visit Home & Office Catalog, page 017

Cable Hooks

Basel - (Side Screw) - Mini Hook

For more about this product visit Home & Office Catalog, page 017

Cable Hooks

L-Hook - (Side Screw) - Picture Hook

For more about this product visit Home & Office Catalog, page 017

Cable Hooks

Crane Hook - (Side Screw) - Picture Hook

For more about this product visit Home & Office Catalog, page 017

Side Clamps

Side Clamp - Single Sided - (Round) - 3/16"

For more about this product visit page 012

Side Clamps

Side Clamp - Double Sided - (Round) - 3/16"

For more about this product visit page 012

Side Clamps

Side Clamp - Single Sided - (Round) - 5/16"

For more about this product visit page 013

Side Clamps

Side Clamp - Double Sided - (Round) - 5/16"

For more about this product visit page 013

Cable Hooks

Self-Gripping - (Small) - Picture Hook

For more about this product visit Home & Office Catalog, page 018

Cable Hooks

Self-Gripping - (Sailors) - Picture Hook

For more about this product visit Home & Office Catalog, page 018

Cable Hooks

Self Gripping - (Picture Hook) with Safety-Lock

For more about this product visit Home & Office Catalog, page 018

Cable Hooks

Self Gripping - (Captains) - Picture Hook

For more about this product visit Home & Office Catalog, page 018

Side Clamps

Side Clamp - Single Sided - (Round) - 7/16"

For more about this product visit page 014

Side Clamps

Side Clamp - (Rotating) - Single Sided 3/8"

For more about this product visit page 014

Side Clamps

Side Clamp - (Rotating) - Double Sided 3/8"

For more about this product visit page 014

Tension Systems - Lower Profile Tensioners



Lower Profile - (Self-Gripping) - Cable Tensioner

For use with:
All Rails, Cables and Cable Rods

Price \$9.95

The multifunctional Self-Gripping glider is perfect for either suspending objects that need to be hung from atop or used as a lower profile floor tensioner for lightweight displays.

When used as a tensioner, this item will stabilize the cable while minimizing the movement of your display.

The Self-gripping glider can be configured to work with all rails, cables and cable rods.

This item is particularly good for retail and commercial spaces that require an indiscreet means of hanging signs, banners and point of purchase material



Lower Profile - Tensioner

Price \$7.95

The Lower profile tensioner is used to create tension between a suspended cable and either the floor or display unit.

This item will stabilize the cable while minimizing the movement of your display.

This item is particularly good for retail and commercial spaces that require an indiscreet means of hanging signs, banners and point of purchase materials.



Anchor and Screw Set - Standard

For use with:
Click Track Classic / Click Track Deco

Price \$12.95

The Ball-End Tesnsioner is used to created tension between two rails when using either the click track classic or click track Deco.



Tension Spring

Price \$4.95

The tension spring is used to create tension between upper and lower rails.

The spring is simply secured to the cable and and then pulled over the ledge of the lower reversed rail.

Tension Systems - Cable Clamps



Side Clamp - Single Sided - (Round) - 3/16"

For use with:
Ceiling Couplers / Hanging Cables / Tension Systems

Price \$4.35

\$4.35 Silver

\$4.50 Black



Side Clamp - Double Sided - (Round) - 3/16"

For use with:
Ceiling Couplers / Hanging Cables / Tension Systems

Price \$4.95

\$4.35 Silver

\$5.45 Black

Product Information

The single sided vertical side clamp is used to attach objects from the side and is perfect for hanging posters signs, banners, foam-board and Plexiglass.

The side clamp is great for window displays, menu boards, offices, conference rooms and in areas where items are frequently changed.

Single Sided Vertical Clamp / Opening 3/16"

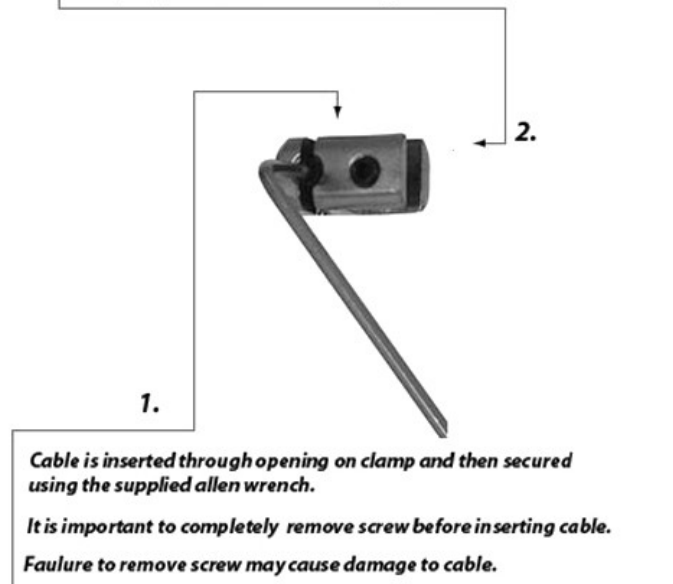
Material: Steel
Available Colors: Silver • White • Black
Opening: 3/16"
Opening Depth: 3/8"
Clamp Profile: Length: 5/8" - Diameter: 3/8"
Weight Support: 4 lbs / 1.8 kg

Side Clamp includes the following items:

1. Clamp
2. Set Screw
3. Hex Wrench

Instalation Instructions

Once clamp is firmly secured to cable, object is then placed through clamps open-end and secured using the allen wrench



Product Information

The Vertical side clamp is perfect for hanging art, signs, banners, foam-board, plexiglass and acrylic pocket displays available through Systematic Art.

The Double-Sided cable clamp is used to create a continuous connection between images.

The side clamp is great for window displays, menu boards, offices, conference rooms and in areas where items are frequently changed.

Double Sided Vertical Clamp - Opening 3/16"

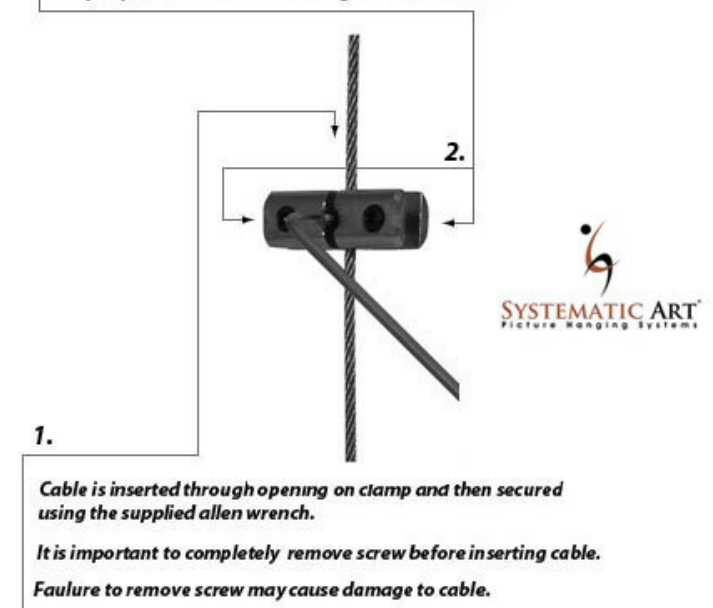
Material: Aluminum
Profile: Round
Available Colors: Silver • White • Black
Opening: 3/16"
Opening Depth: 3/8"
Clamp Profile: Length: 1" - Diameter: 3/8"
Weight Support: 4 lbs / 1.8 kg

Side Clamp set includes the following items:

1. Clamp
2. Set Screw
3. Hex Wrench

Instalation Instructions

Once clamp is firmly secured to the cable, object is then placed through clamps open-end and secured using the allen wrench.



Tension Systems - Cable Clamps



Side Clamp - Single Sided - (Round) - 5/16"

For use with:
Ceiling Couplers / Hanging Cables / Tension Systems

Price \$4.95

\$4.95	Silver
\$5.10	Black
\$5.10	White

Product Information

The Vertical single sided round profile side clamp is ideal for hanging posters, signs, banners, foam-board, Plexiglass and for use with Acrylic pocket displays available through Systematic Art.

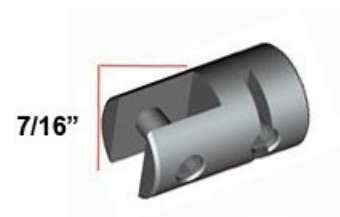
The side clamp is great for window displays, menu boards, offices, conference rooms and in areas where items and objects are frequently changed.

Single Sided Vertical Clamp / Opening 5/16"

Material: Aluminum
Profile: Round
Available Colors: Silver • White • Black
Opening: 5/16"
Opening Depth: 7/16"
Clamp Profile: Length: 1-1/16" - Diameter: 1/8"
Weight Support: 4 lbs / 1.8 kg

Side Clamp includes the following items:

1. Clamp
2. Set Screw
3. Hex Wrench



Side Clamp - Double Sided - (Round) - 5/16"

For use with:
Ceiling Couplers / Hanging Cables / Tension Systems

Price \$5.45

\$5.45	Silver
\$5.65	Black
\$5.65	White

Product Information

The Vertical double-sided round profile cable clamp is perfect for posters, signs, banners foam-board, plexi-glass and acrylic pocket displays available through Systematic Art.

The double-sided cable clamp is used to create a continuous connection between objects and images.

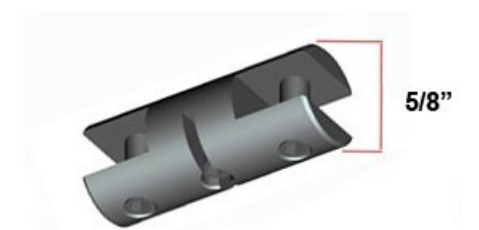
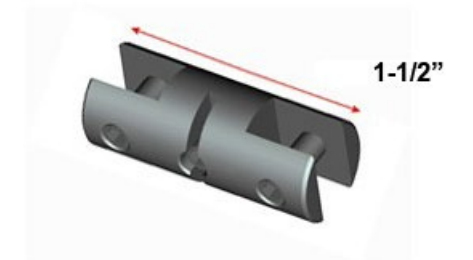
The side clamp is ideal for window displays, menu boards, offices, conference rooms and in areas where items are frequently changed.

Double Sided Vertical Clamp - Opening 5/16"

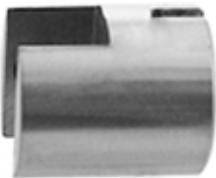
Material: Aluminum
Profile: Round
Available Colors: Silver • White • Black
Opening: 5/16"
Opening Depth: 7/16"
Clamp Profile: Length: 1-1/2" - Diameter: 1/8"
Weight Support: 4 lbs / 1.8 kg

The Double Side Clamp includes the following items:

1. Clamp
2. Set Screw
3. Hex Wrench



Tension Systems - Cable Clamps



Side Clamp - Single Sided - (Round) - 7/16"

For use with:
Ceiling Couplers / Hanging Cables / Tension Systems

Price \$5.95

The Vertical round profile side clamp is perfect for hanging banners signs, banners and foam-board.

The side clamp is ideal for window displays, menu boards, offices, conference rooms and in areas where items are frequently changed.



Side Clamp - (Rotating) - Single Sided 3/8"

For use with:
Ceiling Couplers / Hanging Cables / Tension Systems

Price \$10.95

The Swiveling (Self-Gripping) single sided clamp is perfect for hanging art, signs, banners, foam-board plexiglass, and shelving. The Clamp is able to rotate 360 degrees giving users maximum flexibility.

The side clamp is perfect for window displays, menu boards, offices, conference rooms and in areas where items are frequently changed.

The Self - Gripping Swivel clamp uses 3 ball bearings inside an inner cylinder. Once the cable is inserted to the cylinder, the ball bearings move and grip against the cable causing them to lock.To release simply depress the cylinder with your finger. With cylinder depressed the clamp is then able to freely slide up and down the cable.Once the pusher is released the clamp then locks into position.

Rotating / Side clamp Single Sided - Opening 3/8"

Material: Brass
Function: Self-Gripping / Rotating
Profile: Round / Singe Sided
Available Colors: Satin Silver
Opening: 3/8"
Opening Depth: 7/16"
Clamp Profile: Length: 1-1/2" - Diameter: 5/8"
Weight Support: 4 lbs / 1.8 kg

Side Clamp set includes the following items:

- 1. Clamp
- 2. Set Screw
- 3. Hex Wrench



Side Clamp - (Rotating) - Double Sided 3/8"

For use with:
Cable Hooks / Side Clamps

Price \$12.95

The Swiveling (Self-Gripping) double sided clamp is perfect for panels, signs, banners, foam-board plexiglass, and shelving. The Clamp is able to rotate 360 degrees giving users maximum flexibility.

The side swivel clamp is perfect for window displays, menu boards, offices, conference rooms and in areas where items are frequently changed.

The Self-Gripping Swivel clamp uses 3 ball bearings inside an inner cylinder. Once the cable is inserted to the cylinder, the ball bearings move and grip against the cable causing them to lock. To release simply depress the cylinder with your finger. With cylinder depressed the clamp is then able to freely slide up and down the cable. One the pusher is released the clamp will then lock into position.

Tension Systems - Acrylic Pocket Displays



Acrylic - Pocket Display - Portrait

For use with:
Click-Track Wall Mounted / Gallery Wall Mounted /
Moderna Wall Mounted / Sky Ceiling Mounted / Slim Line Ceiling Mounted

Price \$12.95

\$12.95	8.5" x 11"
\$24.95	8.5" x 14"
\$24.95	11" x 17"

The Acrylic Pocket Display is used to easily hang photos, real estate listings, advertisements, documents, menus and artwork.

The pocket display is suspended using both cables and clamps.

Material: Acrylic Clear
Glass Thickness: 3/16"
Orientation: Portrait
Available Sizes: Multiple



Acrylic - Pocket Display - Landscape

For use with:
Click-Track Wall Mounted / Gallery Wall Mounted /
Moderna Wall Mounted / Sky Ceiling Mounted / Slim Line Ceiling Mounted

Price \$13.95

\$13.95	11" x 8.5"
\$20.95	14" x 8.5"
\$26.95	17" x 11"

The Acrylic Pocket Display is used to easily hang photos, real estate listings, advertisements, documents, menus and artwork.

The pocket display is suspended using both cables and clamps.

Material: Acrylic Clear
Glass Thickness: 3/16"
Orientations: Portrait / Landscape
Available Sizes: Multiple



Acrylic - Card Holder

For use with:
Click-Track Wall Mounted / Gallery Wall Mounted /
Moderna Wall Mounted / Sky Ceiling Mounted / Slim Line Ceiling Mounted

Price \$4.95

\$4.95	4" x 2"
\$5.95	6" x 4"

The Systematic Art label Holder made from acrylic and is perfect for retail, offices, trade shows, galleries and museums.

The acrylic label holder is affixed to the wall with use of double sided tape that is included with the holder.

Material: Acrylic Clear Glass
Thickness: 3/16"
Mounting: Double stick tape (Included)
Orientation: Landscape
Available Sizes: Multiple

The Acrylic Card holder is manufactured with a 1/2" semi circle finger slide for easy insertion and removal of card.